

JOB DESCRIPTION

JOB DETAILS	
Job Title	Coordinator Health & Social Care
Reports to	Hospital Discharge Team Lead
Band	Band 4
Department/Directorate	(Community

JOB PURPOSE

To provide business support, administrative leadership and general office management to deliver a high quality, comprehensive co-ordination service.

Responsible for own workload which may include financial and personnel administration, overseeing maintenance of building(s) and dealing with clients/visitors and multi-disciplinary teams. Will be required to supervise and allocate work to staff in lower bands

KEY RESULT AREAS/PRINCIPAL DUTIES AND RESPONSIBILITIES

The Co-ordinator will be based in the North Devon District Hospital and will provide business support to the (The Hospital Discharge Team).

The post holder will support Health and Social Care staff in optimising patient flow, acting as a central co-ordination point for local multi-disciplinary activity. The post holder will be responsible for a high-quality customer service function in recording contact information, supporting the initial prioritisation of contracts, subsequent feedback and ongoing liaison with referrers and relevant others within the specified response time.

The post holder will fulfil all administration tasks and work as part of a team and has responsibility for the day to day supervision of staff. To meet the needs of the service, the post holder may be required to work in other administrative areas as appropriate as directed by the line manager and may, on occasion, be required to deputise for the line manager.

KEY WORKING RELATIONSHIPS

Areas of Responsibility: To be a central point of contact between the Hospital Discharge Team and other Health and Social Care acute and community services, ensuring exceptional levels of communication in order to provide quality discharges from hospital.

To support the Hospital Discharge Team with all administrative aspects of management of their caseload. Particularly ensuring that it is up to date and accurate at all times.

The role will include patient facing , such as triage of referrals to the team in order to ensure patients are referred correctly and are on the correct discharge pathway.

To assist the team by working collaboratively to try and resolve any delays affecting discharge and ensure that patient flow is effective.

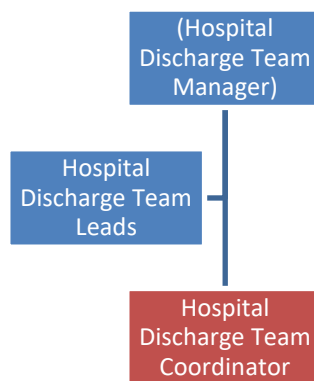
To confidently use all appropriate Health and Social Care record systems in order to support the team with accessing relevant information to support discharge planning)

The post holder is required to deal effectively with staff of all levels throughout the Trust as and when they encounter on a day to day basis. In addition, the post holder will deal with the wider healthcare community, external organisations and the public. This will include verbal, written and electronic media.

Of particular importance are working relationships with:

Internal to the Trust	External to the Trust
<ul style="list-style-type: none"> • Community Services Manager, Service Lead or Team Lead • Community equipment store • Community Health and Social Care Teams • Consultants • RDUH NHS Foundation Trust staff at all levels and all disciplines • Other specialist services 	<ul style="list-style-type: none"> • GPs and other practice staff • Patients, relatives and carers • Social Services • Voluntary agencies

ORGANISATIONAL CHART



FREEDOM TO ACT

To work within Trust policies and procedures. Use initiative to deal with routine matters and complex queries, deciding when it is necessary to refer to the available line manager. Work is managed rather than supervised and the post holder will organise own workload on a day to day basis.

COMMUNICATION/RELATIONSHIP SKILLS

The post holder will be required to adhere to the organisation's standards of customer care. The post holder is required to courteously and efficiently receive enquiries, communicate effectively with staff at all levels across internal and external to the organisation, either by telephone, email or receiving visitors in person, in a tactful and sensitive manner, respecting confidentiality at all times.

The post holder will exchange confidential or contentious information with staff and clients within partner agency organisations where agreement and co-operation is required or where there is a need to diffuse potential aggression from upset/angry clients. The post holder may also be expected to participate in consultation with staff relevant regarding changes to area of work.

The post holder will be expected to behave in accordance with the Trust's values of demonstrating compassion, striving for excellence, respecting diversity, acting with integrity and to listen and support others.

ANALYTICAL/JUDGEMENTAL SKILLS

Judgements on complex facts requiring interpretation and comparing options which may involve exercising judgement when dealing with clients or other departments/partner agencies. This may include

resolving minor problems with regard to personnel, payroll and maintenance, highlighting any problems and conducting risk assessments as appropriate.

PLANNING/ORGANISATIONAL SKILLS

The ability to work using own initiative and manage time effectively to meet deadlines. The post holder will organise own day to day activities and tasks and allocate work to staff as appropriate, arranging staff cover as and when necessary.

The post holder needs to be able to co-ordinate detailed referrals from Health and Social Care professionals, communicate and answer queries from all disciplines. This involves organising own day to day activities, planning of both straightforward and more complex on-going referrals, together with looking in to the longer-term planning of care.

PATIENT/CLIENT CARE

The post holder is required to put the patient, as the first priority, at the centre of all activities. The post holder will have regular contact with patients/clients by phone or face to face and will provide non-medical information and advice to patients and carers. Provision of programmes of care as required by the referrer.

POLICY/SERVICE DEVELOPMENT

Participate in policy and service development. Follows Trust policies, makes comments on proposals and implements administration policies and proposing changes to working practices for own area.

FINANCIAL/PHYSICAL RESOURCES

To monitor stock levels of stationery, receive deliveries and report maintenance faults.

To ensure the efficient and effective use of all resources used within the course of one's own duties, maintaining an awareness of the financial impact of inappropriate use.

HUMAN RESOURCES

Responsible for the day to day supervision or coordination of staff within the department. Maintain and update own training relevant to post. Taking an active part in the development review of own work suggesting areas for learning and development in the coming year.

Demonstrates duties to new starters, and allocate and check work of other administrative staff. Provide on the job training for new staff and work experience students, taking an active part in the development review of own work, suggesting areas for learning and development in the coming year.

INFORMATION RESOURCES

Daily use of IT programmes relevant to the work area to produce documents and reports; input, store and maintain information and may be required to modify systems and processes.

RESEARCH AND DEVELOPMENT

Comply with Trust requirements and undertake surveys as necessary to own work.

PHYSICAL SKILLS

The post holder will have advanced keyboard skills to operate a range of computer software.

PHYSICAL EFFORT

Frequent requirement to sit in a restricted position at display screen equipment for the majority of the working day.

The post holder may be required to exert light physical effort (loads of not more than 5kg.) on a frequent or occasional basis for several short periods or several long periods during the shift.

MENTAL EFFORT

The work pattern is unpredictable, with frequent interruption. There will be an occasional requirement for concentration for data entry.

The post holder will be expected to provide cover for other administration and clerical staff during busy periods, including cover due to sickness absence and annual leave. This may require the post holder to involve travelling and working in other areas within the Trust.

EMOTIONAL EFFORT

Occasionally manage difficult situations, which may arise with abusive clients and telephone callers, of which may need to be referred to a senior member of staff. Rare exposure to distressing circumstances.

WORKING CONDITIONS

Use display screen equipment for substantial proportion of working day.

OTHER RESPONSIBILITIES

Take part in regular performance appraisal.

Undertake any training required in order to maintain competency including mandatory training, e.g. Manual Handling

Contribute to and work within a safe working environment

You are expected to comply with Trust Infection Control Policies and conduct him/herself at all times in such a manner as to minimise the risk of healthcare associated infection

As an employee of the Trust, it is a contractual duty that you abide by any relevant code of professional conduct and/or practice applicable to you. A breach of this requirement may result in action being taken against you (in accordance with the Trust's disciplinary policy) up to and including dismissal.

You must also take responsibility for your workplace health and wellbeing:

- When required, gain support from Occupational Health, Human Resources or other sources.
- Familiarise yourself with the health and wellbeing support available from policies and/or Occupational Health.
- Follow the Trust's health and wellbeing vision of healthy body, healthy mind, healthy you.
- Undertake a Display Screen Equipment assessment (DES) if appropriate to role.

DISCLOSURE AND BARRING SERVICE CHECKS

This post has been identified as involving access to vulnerable adults and/or children and in line with Trust policy successful applicants will be required to undertake a Disclosure & Barring Service Disclosure Check.

GENERAL

This is a description of the job as it is now. We periodically examine employees' job descriptions and update them to ensure that they reflect the job as it is then being performed, or to incorporate any changes being proposed. This procedure is conducted by the manager in consultation with the jobholder. You will, therefore, be expected to participate fully in such discussions. We aim to reach agreement on reasonable changes, but if agreement is not possible, we reserve the right to insist on changes to your job description after consultation with you.

Everyone within the Trust has a responsibility for, and is committed to, safeguarding and promoting the welfare of vulnerable adults, children and young people and for ensuring that they are protected from harm, ensuring that the Trusts Child Protection and Safeguarding Adult policies and procedures are promoted and adhered to by all members of staff.

At the Royal Devon, we are committed to reducing our carbon emissions and minimising the impact of healthcare on the environment, as outlined in our Green Plan available on our website. We actively promote sustainable practices and encourage colleagues to explore and implement greener ways of working within their roles.

PERSON SPECIFICATION

Job Title	Coordinator Health & Social Care
------------------	----------------------------------

Requirements	Essential	Desirable
QUALIFICATION/ SPECIAL TRAINING		
Good Standard of Education	E	
NVQ 3 Business Administration or Team Leadership or Customer Care or equivalent qualification / experience	E	
RSA III or equivalent level of skill gained through experience or alternative qualification	E	
Relevant IT qualification specific to post i.e ECDL	E	
Additional relevant co-ordination knowledge acquired through further experience	E	
KNOWLEDGE/SKILLS		
Effective interpersonal, organisational and communication skills	E	
Ability to manage own workload and to supervise the workload of others, ability to delegate tasks	E	
Advanced IT/Keyboard skills, IT literate	E	
Medical Terminology		D
Knowledge of Adult & Community Services CareFirst Systems		D
EXPERIENCE		
Significant clerical/administrative experience within customer care environment or similar	E	
Experience of supervising staff	E	
Previous NHS/Social Services experience		D
Cash management (if applicable to post)	E	
PERSONAL ATTRIBUTES		
Reliability and flexibility, able to contribute to changing demands of the service.	E	
Willing to undertake training relevant to the post.	E	
Ability to work independently, within a team	E	

Ability to demonstrate a diplomatic caring attitude whilst maintaining confidentiality.	E	
OTHER REQUIREMENTS		
The post holder must demonstrate a positive commitment to uphold diversity and equality policies approved by the Trust.	E	
Ability to travel to other locations as required	E	

		FREQUENCY			
		(Rare/ Occasional/ Moderate/ Frequent)			
WORKING CONDITIONS/HAZARDS		R	O	M	F
Hazards/ Risks requiring Immunisation Screening					
Laboratory specimens	N				
Contact with patients	Y				X
Exposure Prone Procedures	N				
Blood/body fluids	N				
Laboratory specimens	N				
Hazard/Risks requiring Respiratory Health Surveillance					
Solvents (e.g. toluene, xylene, white spirit, acetone, formaldehyde and ethyl acetate)	N				
Respiratory sensitisers (e.g isocyanates)	N				
Chlorine based cleaning solutions (e.g. Chlorclean, Actichlor, Tristel)	N				
Animals	N				
Cytotoxic drugs	N				
Risks requiring Other Health Surveillance					
Radiation (>6mSv)	N				
Laser (Class 3R, 3B, 4)	N				
Dusty environment (>4mg/m3)	N				
Noise (over 80dBA)	N				
Hand held vibration tools (=>2.5 m/s2)	N				
Other General Hazards/ Risks					
VDU use (> 1 hour daily)	Y				X
Heavy manual handling (>10kg)	Y		X		
Driving	N				
Food handling	N				
Night working	N				
Electrical work	N				
Physical Effort	Y		X		
Mental Effort	Y				X
Emotional Effort	Y	X			
Working in isolation	N				
Challenging behaviour	Y		X		