

JOB DETAILS	
<b>Job Title</b>	Trainee Advanced Practitioner (Acute Medicine)
<b>Reports to</b>	Clinical Matron/Senior Operations Manager
<b>Band</b>	Band 7
<b>Department/Care Group</b>	Acute Medicine/Medicine Care Group

JOB PURPOSE
<ul style="list-style-type: none"> <li>The post holder will be practising under supervision as a trainee advanced practitioner (tAP) within the acute medicine service, including the Acute Hospital at Home (AHAH) and potential outreach into the community to develop a high level of expertise to provide patient-centred clinical care. This will encompass the skills of assessment, examination, diagnosis, and treatment within an agreed scope of practice throughout acute medicine, including a rotation within community services. The post holder will assist under supervision in the safe referral and discharge of patients with undifferentiated and undiagnosed presentations in any areas of working.</li> <li>The post holder will work within their professional code of practice and all legal frameworks related to their developing role, for example non-medical prescribing legislation, assessing and managing referrals, referring to other specialties, requesting and interpreting radiological imaging and other investigations commonly required, performing procedures including arterial blood gas sampling and lumbar punctures.</li> <li>To successfully complete the Advanced Practitioner (AP) Degree Apprenticeship MSc (Level 7) programme or MSc Advanced Practice non-apprenticeship route in line with the Trust Framework, Health Education England (HEE), speciality standards and their primary professional regulatory body for Advanced Practice, with the expectation that on successful completion the post holder will move into a qualified AP role at band 8a.</li> <li>The post holder will be working towards fulfilling the expectations of an AP as set out in the Trust Framework for Advanced Practice and the Trust AP Job Description.</li> <li>On successful completion of the Apprenticeship programme, the post-holder will be able to: <ul style="list-style-type: none"> <li>Utilise advanced clinical reasoning skills and assessment techniques autonomously in the context of their speciality.</li> <li>Identify presenting problems and provide an accurate diagnosis.</li> <li>Set appropriate treatment aims and objectives with the patient.</li> <li>Competently plan and implement realistic and safe programmes of investigation and treatment.</li> <li>Evaluate investigations and treatment plans to assess impact and outcome.</li> <li>Relate findings to presenting pathology and revise treatment plans.</li> <li>Demonstrate advanced clinical competence in the speciality area.</li> </ul> </li> </ul>

KEY RESULT AREAS/PRINCIPAL DUTIES AND RESPONSIBILITIES
<p>The Trainee AP will be based in acute medicine and works within other related working areas such as the AHAH service under supervision.</p> <p>The post holder under supervision will:</p> <ul style="list-style-type: none"> <li>Proactively support the development of the AP role within the acute medicine service primarily focusing on the emergency medical take from admission to discharge positively impacting on length of stay and the quality patient care.</li> </ul>

- Actively participate in professional leadership and education across the nursing, medical and therapy teams.
- Actively participate in and represent the Trust in the Regional networks.
- The focus of care will be looking at a wide range of non-elective general medical admissions with the intention of avoiding admissions and/or reducing length of stay, through admission to our AHAH service. It will be expected that they will work as part of a wide multidisciplinary team to deliver best possible care of the patient.

### KEY WORKING RELATIONSHIPS

The post holder is required to deal effectively with staff of all levels throughout the Trust, the wider Healthcare community, external organisations and the public. This will include verbal, written and electronic media.

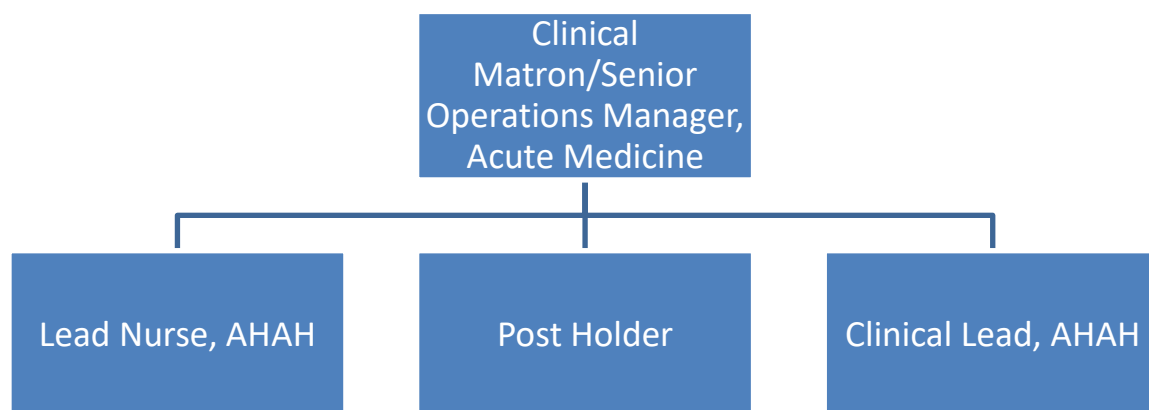
#### Internal to the Trust

- Acute Medicine Nursing Teams
- Allied Healthcare Professionals
- Resident Doctor Medical Team
- Consultant Physicians
- Clinical Leads
- Clinical Matrons
- Management Teams
- Care Group Director of Patient Care
- Psychiatric Liaison Team
- Clinical Governance Team

#### External to the Trust

- Patients, Service Users, Families and Carers
- Health and Social care sector
- Private sectors
- Peninsula network

### ORGANISATIONAL CHART



### FREEDOM TO ACT

The post holder under supervision will manage own workload within areas of individual competency in acute medicine, diagnoses in order to choose appropriate treatment options; follow up frequency, and referral to other pathways or discharge. This will include:

- Utilising advanced clinical reasoning skills and assessment techniques autonomously in the context of their speciality.
- Acting as a lead specialist within their sphere of expertise.
- Working within their professional code of conduct.
- Assimilating risk/ benefits and rationalise decision making based on extensive knowledge skills and experience, recognising and acting on potential gaps in knowledge.
- Seeking out advice and support from consultant colleague when required.
- Supporting the writing of policies and maintaining standards with acute medicine.

### COMMUNICATION/RELATIONSHIP SKILLS

The post holder under supervision will:

- Act as a role model demonstrating high standards of holistic care and provide clinical leadership across the Trust for this specialist area.
- Act as a mentor/clinical supervisor as appropriate.
- Provide and receive highly sensitive, complex or contentious information relating to patient care and communicates such information to patients, relatives with empathy providing reassurance as required.
- Use highly developed communication, negotiation and persuasive skills at a range of levels across a variety of professional groups and organisations.
- Be able to motivate and negotiate with staff using highly developed listening and persuasive skills to implement change within the service and manage any other impact on other service areas.

#### **ANALYTICAL/JUDGEMENTAL SKILLS**

The post holder under supervision will:

- Make operational judgements, manages conflicting views, reconciles inter and intra-professional differences of opinion and escalates for senior clinician review when required.
- Frequently apply advanced skills in communicating complex, sensitive and emotive information to patients and carers. This includes discussion about diagnosis, disease progression or end of life.
- Identify own personal development needs to work as an advanced practitioner, in accordance with the Trust Framework for Advanced Practice, and take appropriate action to ensure these needs are met to achieve qualification at masters level.

#### **PLANNING/ORGANISATIONAL SKILLS**

The post holder under supervision will:

- Deliver formal and informal teaching initiatives as part of the education strategy in collaboration with the clinical lead to ensure practice development and improved care for patients.
- Maintain an active learning environment and have an on-going teaching role across the multi professional team.
- Attend relevant clinical/professional meetings, seminars and conferences.
- With the support of the Clinical Matron/Consultants, makes representation as appropriate at various meetings, providing feedback to the organisation on clinical and professional issues which have an impact on care and standards of practice within their sphere of responsibility.
- Apply theory to practice through a clinical decision-making model.
- Apply the principles of therapeutics and safe prescribing.
- Plan and organise own specialist care packages for patients within their speciality remit which will require formulation and adjustment as required in response to patient's conditions.
- Respond rapidly to changing priorities based on service need to meet patient requirements.

#### **PATIENT/CLIENT CARE**

The post holder under supervision will:

- Provide advanced level holistic practice to clinical area of practice, working collaboratively with all members of the multi professional team to meet the needs of patients.
- Ensure consistent high standard evidence based clinical intervention and decision making informed by local protocols and national guidelines.
- Work in accordance with the Trust Framework for Advanced Practice, HEE and speciality standards in undertaking advanced specialist skills in the assessment, planning, implementation and evaluation of care for patients referred. This Includes managing episodes of patient care requesting and interpreting appropriate investigations within the scope of practice.
- Advise patients, their carers and staff on the promotion of health and prevention of illness.
- As a Non-Medical Prescriber, prescribe medications in accordance with personal scope of practice, national guidelines, and Trust policy and service protocols.
- When deemed appropriate by their manager and clinical supervisor undertake the ELfH training on assessment and issuing of 'Fit Notes; as part of their tAP role (delete or include as appropriate).
- Contribute to the co-ordination and effective management of admission and discharge processes taking a lead in areas of complexity.

<ul style="list-style-type: none"> <li>• Apply specialist knowledge in providing advice and support to patients or carers to facilitate informed choice, self-efficacy, psychological adjustment and recovery.</li> <li>• Act as an expert in one of the following fields - nursing/therapy/pharmacist resource in specialist field.</li> </ul>
<b>POLICY/SERVICE DEVELOPMENT</b>
<p>The post holder under supervision will:</p> <ul style="list-style-type: none"> <li>• Conduct, and lead on the quality improvement to ensure delivery of a safe high-quality service according to national guidance and best practice Trust policies, protocols and service strategy.</li> <li>• Conduct clinical risk assessments, commence secondary prevention, provide health promotion advice and plan post-hospital interventions for patients within acute medicine if appropriate in accordance with service protocols and Trust policies.</li> <li>• Act as a resource for health care professionals working within the Trust and primary care, providing specialist advice and support concerning the assessment and management of patients within the acute medicine specialty.</li> <li>• Contribute to the management of the specialist service by providing periodical reports as per divisional requirements.</li> <li>• Participate in operational and strategic planning for the development and delivery of the service, including the development of evidence based clinical guidelines to promote good practice.</li> <li>• Develop protocols for specialist area considering impact on other services and develop policies as required.</li> <li>• Demonstrate compliance with professional policies and procedures at all times, working to local and national evidence-based guidelines.</li> </ul>
<b>FINANCIAL/PHYSICAL RESOURCES</b>
<ul style="list-style-type: none"> <li>• Maximises the efficient use of resources and alert budget holders where treatment regimes change.</li> </ul>
<b>HUMAN RESOURCES</b>
<ul style="list-style-type: none"> <li>• Provides representation on Trust committees/meetings as required.</li> <li>• Supervises clinical practice as appropriate of identified members of the clinical team.</li> <li>• Develops leadership and management skills in order to ultimately be able to lead on specific practice and service developments or evaluations within a service strategy to which they also actively contribute as a senior clinician.</li> <li>• Delivers formal and informal teaching initiatives as part of the education strategy in collaboration with the clinical lead to ensure practice development and improved care for patients.</li> </ul>
<b>INFORMATION RESOURCES</b>
<ul style="list-style-type: none"> <li>• Records personally generated information, maintains patient / client records to high information governance standards at all times.</li> <li>• Records and processes research results and disseminate effectively at appropriate levels.</li> <li>• Uses appropriate computer software to support information analysis in relation to research data.</li> <li>• Ensures effective documentation in the reporting of incidents using the approved channels.</li> </ul>
<b>RESEARCH AND DEVELOPMENT</b>
<ul style="list-style-type: none"> <li>• Seeks out new knowledge by reading, enquiring and participating in continuing education and attend relevant clinical/professional meetings, seminars and conferences.</li> <li>• Reviews and disseminate new information to relevant staff.</li> <li>• Evaluates clinical practice in relation to its evidence base and clinical effectiveness.</li> <li>• Participates in research within scope of professional practice, to include active participation in research and audit projects and Quality Assurance projects at least once a month.</li> <li>• Uses audit skills to enable the specialist team and other health professionals to improve quality of care by undertaking audits of clinical practice and actively contribute to the implementation of the findings/recommendations.</li> </ul>
<b>PHYSICAL SKILLS</b>
<p>Initially under supervision:</p>

- Advanced clinical examination skills (equivalent to a junior doctor, depending on speciality, may include cannulation, venepuncture, lumbar puncture, minor surgery).
- Uses advanced analytical and judgemental clinical skills within a diagnostic process, and with reference to evidence based practice and local protocols, to consider differential diagnosis in order to ensure the delivery of appropriate care.
- Dexterity and accuracy required in relation to clinical practice including: manual handling and treatment of patients with complex and specialist needs, whilst carrying out functional rehabilitation, mobilisation and manipulative procedures on a frequent basis. This would require moderate physical effort over short periods.
- Assesses, prescribes and demonstrates the safe use of highly specialist and non-specialist equipment.
- To have highly developed computer skills to maintain patient records, prepare reports, prepare and deliver presentations, clinical audit, research and to support other organisational need and clinical practice.

#### **PHYSICAL EFFORT**

- Highly developed dexterity, co-ordination and palpatory skills for assessment, manual handling and treatment of patients. This would require moderate physical effort over short periods.
- The post holder maybe required to travel to a variety of locations to meet service requirements, including community outreach and to attend leadership meetings.

#### **MENTAL EFFORT**

The post holder under supervision will:

- Clinically lead a team of staff and to deal with challenge and conflict.
- Be flexible to the demands of the work including unpredictable work patterns.
- Frequently be able to concentrate with persistent interruptions, managing patients with complex needs and supporting members of the team.
- Be able to relay or translate complex information to staff, patients, carers into a clear and understandable format.
- Produce and interpret documents, reports and briefings to support, develop and lead specialist service area.
- Frequently requires long periods of concentration, particularly when using a VDU.
- Identify strategies to motivate patients who are complex, have cognitive impairment or have limited communication to comply with their treatment plan.
- Represent the service, profession and organisation in a variety of meetings/forums.

#### **EMOTIONAL EFFORT**

The post holder under supervision will:

- Work with patients/service users, and carers, to optimise outcomes or who have a poor/life limiting prognosis including the communication of distressing news.
- Use clinical leadership skills to support decision making and resolve conflict.
- Be able to make calm, rational decisions under stressful situations.
- Deal effectively and efficiently with issues of complaint and concern. Demonstrating listening and empathic skills with the ability to resolve potential contentious issues.

#### **WORKING CONDITIONS**

- Work with patients with a wide range of complex conditions which may involve exposure including frequent contact with bodily fluids such as blood, sputum, urine, vomit; fleas and lice.
- There will be occasional exposure to significantly distressed and challenging patients with occasional exposure to verbal and physical aggression.
- Ability to work in shared space with often noisy and frequent interruptions.

#### **OTHER RESPONSIBILITIES**

- Take part in regular performance appraisal.
- Undertake any training required in order to maintain competency including mandatory training, e.g. Manual Handling.
- Contribute to and work within a safe working environment.

- You are expected to comply with Trust Infection Control Policies and conduct him/herself at all times in such a manner as to minimise the risk of healthcare associated infection.
- As an employee of the Trust, it is a contractual duty that you abide by any relevant code of professional conduct and/or practice applicable to you. A breach of this requirement may result in action being taken against you (in accordance with the Trust's disciplinary policy) up to and including dismissal.

You must also take responsibility for your workplace health and wellbeing:

- When required, gain support from Occupational Health, Human Resources or other sources.
- Familiarise yourself with the health and wellbeing support available from policies and/or Occupational Health.
- Follow the Trust's health and wellbeing vision of healthy body, healthy mind, healthy you.
- Undertake a Display Screen Equipment assessment (DES) if appropriate to role.

#### **DISCLOSURE AND BARRING SERVICE CHECKS**

This post has been identified as involving access to vulnerable adults and/or children and in line with Trust policy successful applicants will be required to undertake a Disclosure & Barring Service Disclosure Check.

#### **GENERAL**

This is a description of the job as it is now. We periodically examine employees' job descriptions and update them to ensure that they reflect the job as it is then being performed, or to incorporate any changes being proposed. This procedure is conducted by the manager in consultation with the jobholder. You will, therefore, be expected to participate fully in such discussions. We aim to reach agreement on reasonable changes, but if agreement is not possible, we reserve the right to insist on changes to your job description after consultation with you.

Everyone within the Trust has a responsibility for, and is committed to, safeguarding and promoting the welfare of vulnerable adults, children and young people and for ensuring that they are protected from harm, ensuring that the Trusts Child Protection and Safeguarding Adult policies and procedures are promoted and adhered to by all members of staff.



# PERSON SPECIFICATION

<b>Job Title</b>	Trainee Advanced Clinical Practitioner: Acute Medicine
------------------	--

Requirements	Essential	Desirable
Professionally Registered- Nurse/ AHP / Pharmacist.	E	
Evidence of postgraduate study at level 6.	E	
Post Grad Teaching qualification or equivalent.		D
Management qualification/leadership qualification.		D
Non-Medical Prescribing (supported as part of AP pathway).		D
Functional Skills, Math and English at Level 2 or equivalent (Apprenticeship requirement).		D
Willingness to successfully complete the Advanced Practitioner (AP) Degree Apprenticeship MSc programme or MSc Advanced Practice non-apprenticeship route in line with the Trust Framework, Health Education England (HEE), speciality standards and their primary professional regulatory body for Advanced Practice, with the expectation that on successful completion the post holder will move into a qualified AP role.	E	
<b>KNOWLEDGE/SKILLS</b>		
Previous knowledge and experience of working within speciality.		D
Ability to manage own patient caseload.	E	
Good communication skills.	E	
Established teaching skills.		D
Knowledge of quality improvement and research methodology.		D
Understanding of the Advanced Practitioner role, and responsibilities as well as appropriate legal frameworks and the Multi professional Advanced Practice Framework.	E	
<b>EXPERIENCE</b>		
Extensive experience in caring for patients across a wide variety of clinical settings.		D
Experience of Innovation and change management.		D
Experience in applying research findings to practice.		D
Understanding of health promotion and counselling.	E	
Experience of providing clinical supervision in practice.	E	
<b>PERSONAL ATTRIBUTES</b>		
Effective communication and leadership skills.	E	

Ability to motivate self and others to meet timelines.	E	D
Committed to service development.	E	
Ability to work autonomously and in a Multidisciplinary team.	E	
Flexible working practice.	E	
Effective organisational skills.	E	
<b>OTHER REQUIREMENTS</b>		
Committed to further personal and professional development.	E	
Able to understand requirement to manage resources effectively.	E	
Ability to travel and move between sites and across Devon as required.	E	
The post holder must demonstrate a positive commitment to uphold diversity and equality policies approved by the Trust.	E	
Ability to work in shared space with often noisy and frequent interruptions.	E	



WORKING CONDITIONS/HAZARDS		FREQUENCY (Rare/ Occasional/ Moderate/ Frequent)			
		R	O	M	F
<b>Hazards/ Risks requiring Immunisation Screening</b>					
Laboratory specimens	Y				Y
Contact with patients	Y				Y
Exposure Prone Procedures	Y	Y			
Blood/body fluids	Y				Y
<b>Hazard/Risks requiring Respiratory Health Surveillance</b>					
Solvents (e.g. toluene, xylene, white spirit, acetone, formaldehyde and ethyl acetate)	N				
Respiratory sensitisers (e.g isocyanates)	N				
Chlorine based cleaning solutions (e.g. Chlorclean, Actichlor, Tristel)	Y	Y			
Animals	N				
Cytotoxic drugs	N				
<b>Risks requiring Other Health Surveillance</b>					
Radiation (>6mSv)	Y				Y
Laser (Class 3R, 3B, 4)	N				
Dusty environment (>4mg/m3)	N				
Noise (over 80dBA)	N				
Hand held vibration tools (=>2.5 m/s2)	N				
<b>Other General Hazards/ Risks</b>					
VDU use ( > 1 hour daily)	Y				Y
Heavy manual handling (>10kg)	Y				Y
Driving	Y		Y		
Food handling	N				
Night working	Y		Y		
Electrical work	N				
Physical Effort	Y				Y
Mental Effort	Y				Y
Emotional Effort	Y				Y
Working in isolation	Y		Y		
Challenging behaviour	Y			Y	